



Richmor All-In-One DSM ADAS AI Vehicle DVR Product Description



Main Features

- 1) DSM+ADAS AI function.

2) **H.265** compression, save storage and 3G/4G data traffic cost.

3) **Easy installation, 1/5 of normal time.**

4) **Integrated speaker, sound pick up, faced forward camera.**

5) Support **Portuguese, Spanish and English.** Other language customization.

DSM function

DSM stands for driver status monitoring. Detection including **smoking, calling, distraction, fatigue, leaving seat**, etc.



ADAS function

ADAS stands for advanced driving assistance system. It detects potential collision or danger through front view and gives pre-warning to driver. Detection includes forward collision warning(**FCW**), lane departure warning(**LDW**), headway monitoring warning(**HMW**).

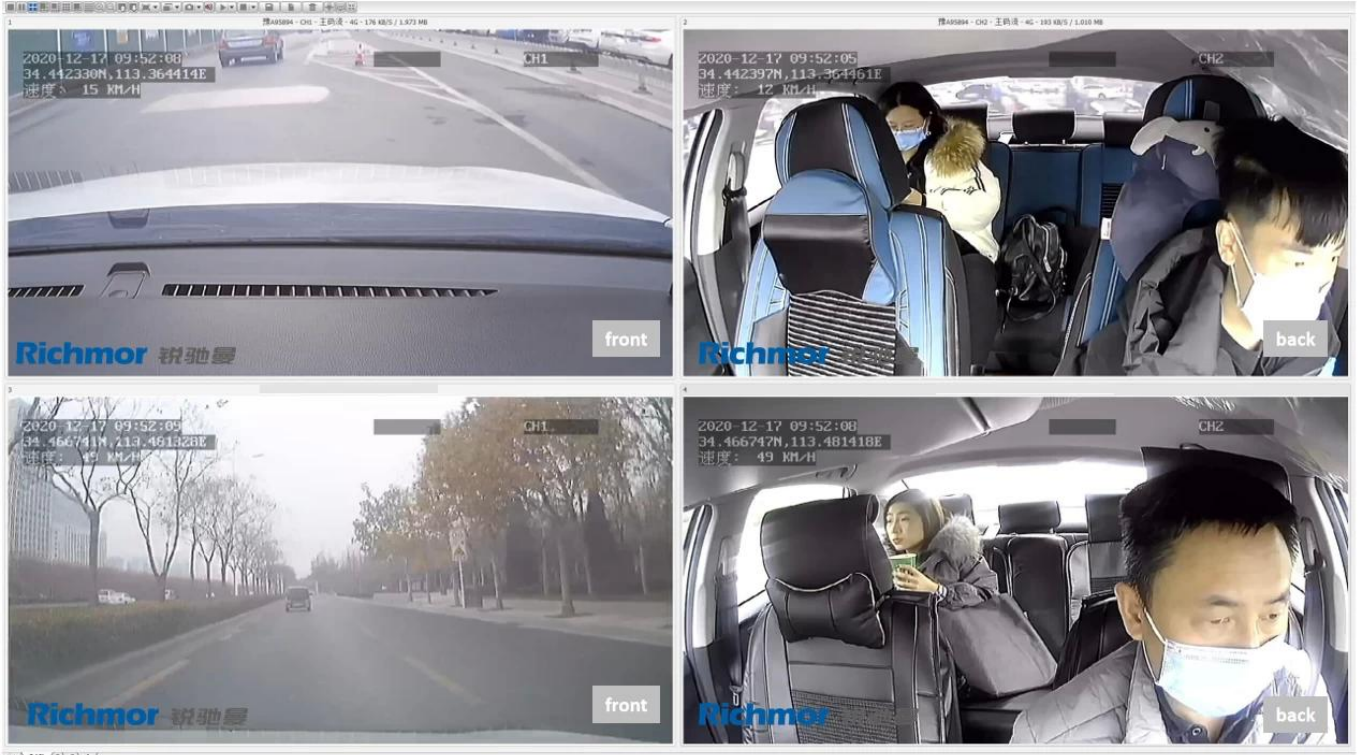


Management Platform

Using CMSV6 and Richmor platform for fleet management.

Support Android app, PC client, IOS client to remotely view.

Support API/SDK integration.



Easy Installation

Simple wire bunch, use 3M glue to be pasted to windshield.

Easy installation only take 1/5 of normal time. Save time and labor cost.



Specification

item	value
Model Number	RCM-BK6I-001
Product name	Mini AI MDVR
Video compression	H,265 and H.264
Video input	4 Channels

Resolution	4*1080p/720p
Video Output	1*BNC
Audio input	2 channels
Audio output	1 channel
Alarm input	5 channels
Alarm output	1 channel
Storage	2 TF card (128GB each card)
Communication way	GPS/3G/4G/WIFI (optional)
AI function	DSM; face recognition
Language	Chinese/English/Customization
Warrenty	12 month
Packing & Delivery	



The packing can be the normal industry Packing or customized service.

Company Profile

Shenzhen Richmor Technology Development Co., Ltd. is a TOP high-tech enterprise/manufacturer specialized in digital and intelligent mobile video surveillance products, with rich experiences of developing, producing and selling for 14 years. Products cover **3G 4G SD card/HDD mobile DVRs, ADAS DSM BSD AI mobile DVRs/Dashcams, MINI DVRs, HD vehicle cameras** etc. As a professional manufacturer, we devote ourselves to providing customers most advanced technologies and products with highest quality.

01.
Our company



02. Office area

03. Service team



04.
Factory Photos

Industrial Hisilicon 3520D image processor chip

Choose the electronic material of industrial grade specification, ensure the life of the component and the stability of the whole machine.

Adopt low heat resistance aluminum profile to make equipment shell, strong and durable, protect heat dissipation.

Temperature rating



High quality image processing



International brand components



Industrial design





FAQ

1. What is the cost for software?

Richmor provides free platform and free software for you to build your own server. If you don't want to build your server, we can provide server service for you.

2. Should I set up server at my country or using your server?

Both, but we suggest set up server at your side which will be with perfect effective, Our well trained sales & engineers will reply you in time to work together with you.

3. OEM/ODM Service?

Yes, we can. Tell your idea to us, will work with our developers to design for you. There are already successful software and software customization cased in USA, Russia, Brasil, UK, etc.

4. Does your Platform and Device support API/SDK integration?

Yes, and we welcome!

5. What comes along with the package?

In addition to the the host device, power cable & key & remote control & necessary accesories are included for a complete solution, no need extra cost.